

**STANDARD  
COLORS**

# NOVAFLEX<sup>SILICONE</sup> PRO

## PREMIUM ADHESIVE SEALANT



Impervious to UV



No solvents or odor



All weather  
-20°F to 160°F



Permanently flexible



Superior adhesion



Rain safe  
1 hour



20 year limited warranty



24 month shelf life



NFX150  
Translucent



NFX100  
White



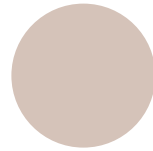
NFX101  
Blue White



NFX104  
Up White



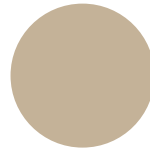
NFX105  
Antique White



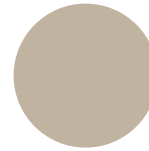
NFX3482  
Sand



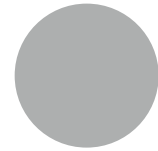
NFX3461  
Almond



NFX140  
Beige



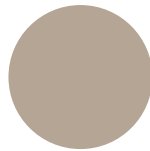
NFX191  
Sandstone



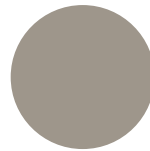
NFX115  
Light Gray



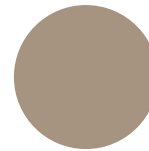
NFX111  
Gray



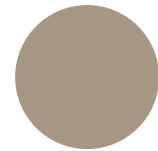
NFX138  
Dark Sand



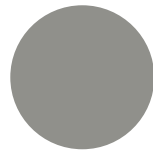
NFX156  
Silver Limestone



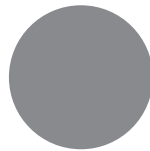
NFX3333  
Sierra Tan



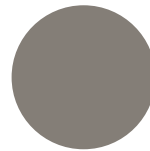
NFX146  
Pebblestone



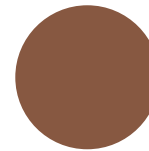
NFX3514  
Gutter Gray



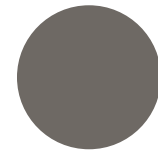
NFX4103  
Silver Metallic



NFX118  
Slate Gray



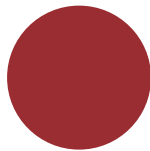
NFX157  
Copper



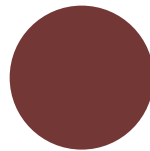
NFX117  
Gunmetal Gray



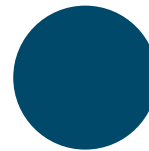
NFX134  
Terratone



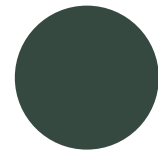
NFX196  
Regal Red



NFX182  
Roof Red



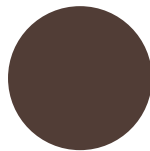
NFX171  
Regal Blue



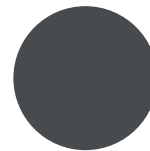
NFX169  
Forest Green



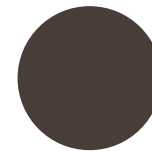
NFX168  
Hartford Green



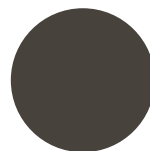
NFX137  
Brown



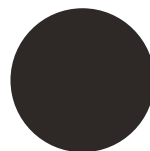
NFX126  
Charcoal Gray



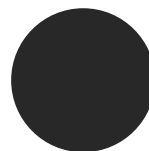
NFX120  
Dark Bronze



NFX121  
Lincoln Bronze



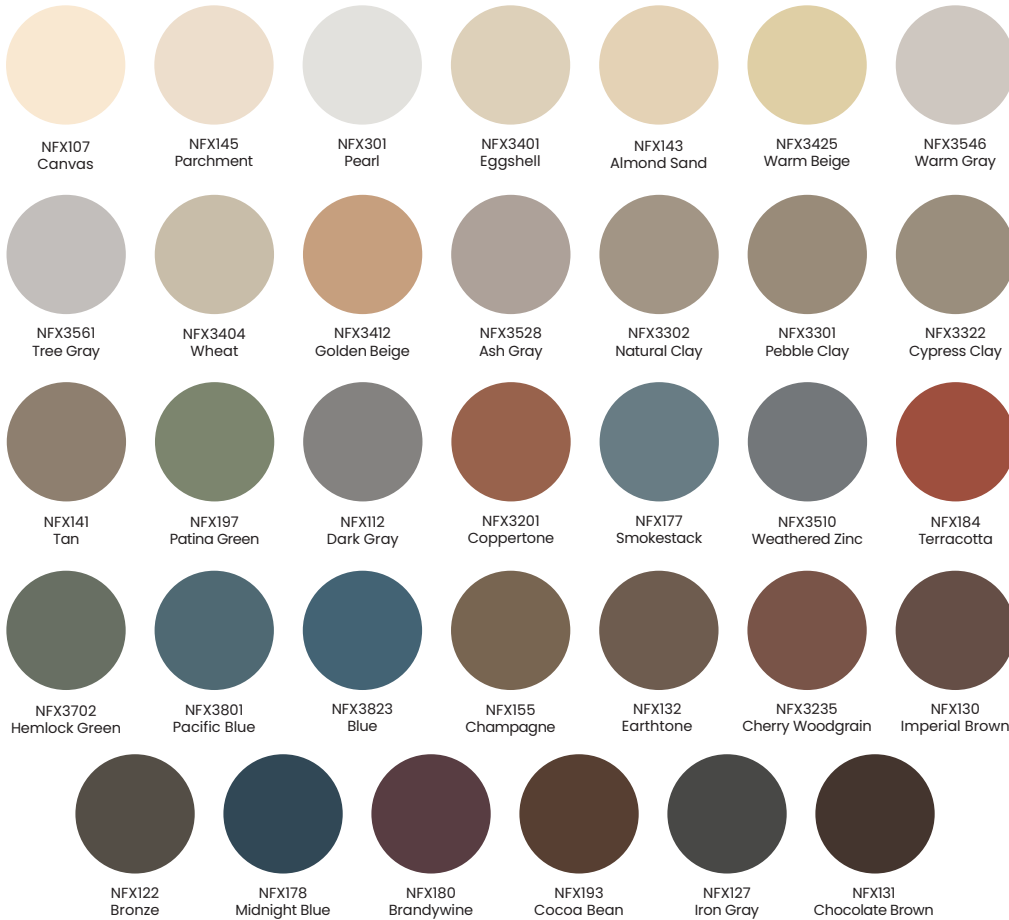
NFX194  
Exterior Bronze



NFX110  
Black

Visit [novagard.com/colors](http://novagard.com/colors) to use our online matching tool to cross reference NovaFlex colors to popular manufacturers.

## Made to Order Colors



Colors shown for illustrative purposes. Verify product color match before applying.  
Contact your representative for order information and program details.



### Permanently flexible

- Will not shrink or crack
- Waterproof
- Mold/mildew resistant
- Superior UV resistance

### Interior & exterior applications

- 100% neutral cure silicone
- Will not sag or slump
- Completely cured within 48 hours
- Extrudes from -20°F to 160°F
- Adheres to:
  - vinyl
  - fiber cement
  - metals
  - wood
  - masonry
  - PVC / PVDF
  - most common construction materials

### AAMA verified for window installations

### Available in a large selection of major manufacturer colors

- Class 50: All colors
- Class 35: Translucent, metallics

### VOC compliant in all 50 states (Green Building Compliant)

- PFAS free
- Low odor
- Solvent free
- HFC free

### Easily gunned at all temperatures

- Weatherproof plastic cartridges w/removable tips
- Excellent tooling properties
- Will not freeze

### Available in

- 10 oz cartridges
- 20 oz sausages



# NOVAGARD

5109 Hamilton Avenue  
Cleveland, OH 44114 USA  
(216) 881-8111 | (800) 380-0138  
novagard.com

ISO 9001:2015 QMS (with Design)  
IATF 16949:2016 QMS (with Design)

## PRODUCT SPECIFICATIONS

Physical Property	Test Method	Performance Range Type I - Class 35	Performance Range Type II - Class 50
Appearance		Paste (Translucent, Metallics)	Paste (Various Colors)
Viscosity	Brookfield #7 @10 rpm	3,500 - 7,000 poises	4,500 - 8,000 poises
Extrusion Rate	1/8" Orifice @ 50 psi	30 - 80 grams/minute	30 - 80 grams/minute
Skin Over Time	3/8" @ 50% RH & 77°F	5 - 15 minutes	5 - 15 minutes
Through Cure	3/8" @ 50% RH & 77°F	48 hours (14 days for OEM window applications)	48 hours (14 days for OEM window applications)

## TYPICAL PROPERTIES\*

Physical Property	Test Method	Typical Value Type I - Class 35	Typical Value Type II - Class 50
Specific Gravity		1.00 - 1.05	1.15 - 1.25
Tensile Strength	ASTM D412	140 - 200 psi	170 - 220 psi
Elongation	ASTM D412	500 - 650%	800 - 1,000%
Tear Resistance	ASTM D624	30 - 35 pli	30 - 35 pli
Hardness (Shore A)	ASTM D2240	15 - 25	20 - 30
Service Temperature		-40°F to 400°F (-40°C to 204°C)	-40°F to 400°F (-40°C to 204°C)
Application Temperature		-20°F to 160°F (-29°C to 71°C)	-20°F to 160°F (-29°C to 71°C)
Joint Sealant Designation	ASTM C920	Type S, Grade NS Class 35 Use NT, M, G, A, O	Type S, Grade NS Class 50 Use NT, M, G, A, O
Adhesion Glass Aluminum Vinyl	ASTM C794	12 - 15 pli 10 - 14 pli 12 - 15 pli	12 - 15 pli 10 - 14 pli 12 - 15 pli
Shelf Life		24 months - cartridge 18 months - sausage	24 months - cartridge 18 months - sausage

\*The values outlined reflect testing that was conducted under laboratory conditions, actual results may vary. The information provided in the above table is not intended for use in preparing specifications. Please consult manufacturer for additional information.