

If you're like most high-quality window and door manufacturers, your drive to produce great windows and doors people will be proud to own is always pitted against your reality of needing to do so in ever more efficient, effective ways.

Well, Novagard has over 30 years of silicone experience.

Fortified by the largest R&D group in our class.

But, our *best advantage*?

We put together the right mix of silicone by putting together the right mix of people.

We always start a project the same way. With a meeting of the minds — talking through your performance needs and processes to anticipate any challenges and adjust ahead of time.

So that new window or door you want to realize will always end up the same way:

Coming successfully off the end of your manufacturing line.

NOVAGARD[®]
Performance Silicones



Effective Date: Oct 2024-V4.3.2

Ten ways to seal your reputation

After all the styling and engineering, it comes down to assembly. With over 30 years of silicone expertise, Novagard has seen through a *lot* of windows and finished off a *lot* of doors.

A sealant system for every need.



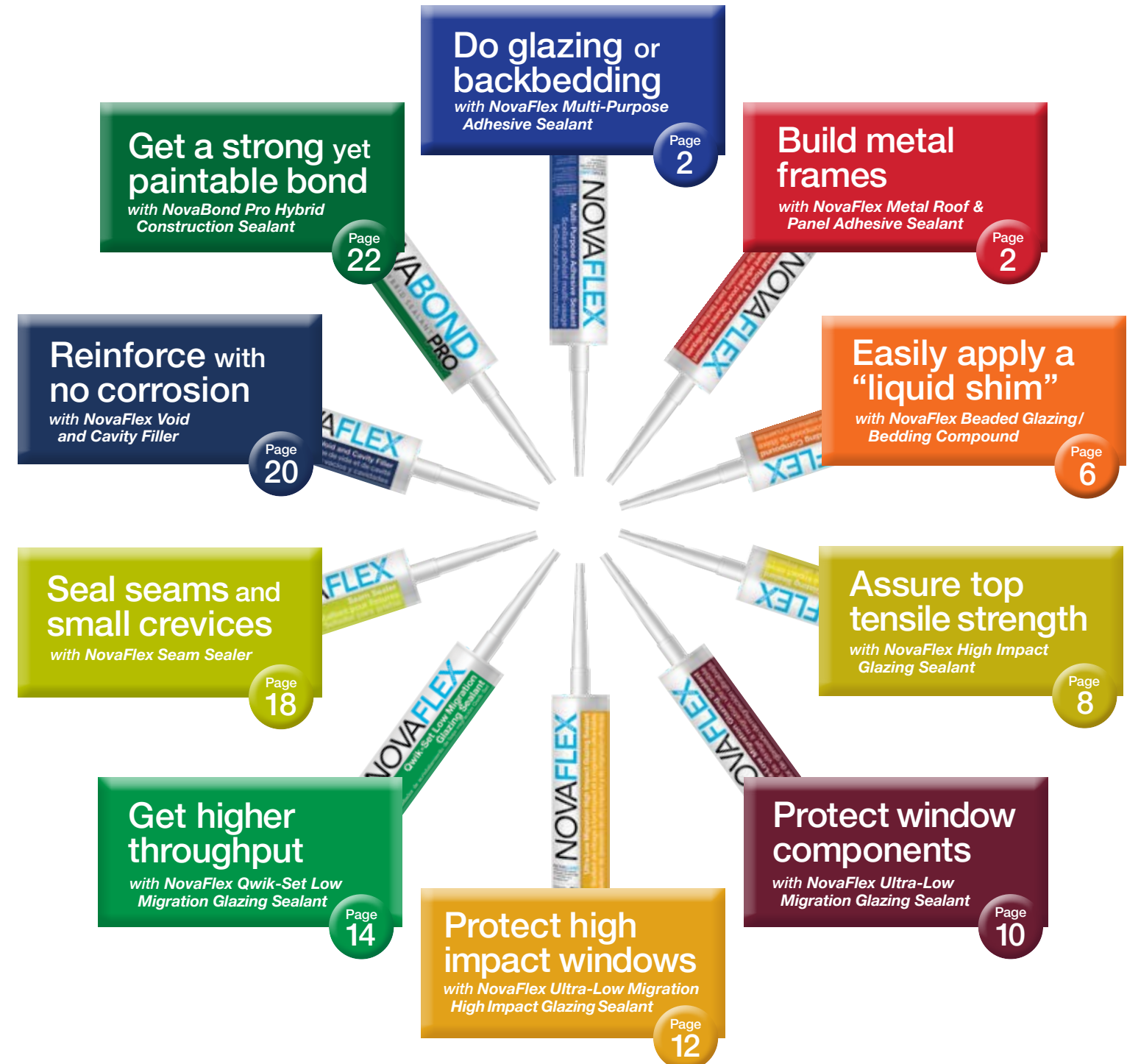
The quality of our products will gain you just that much *more* respect for the quality of *yours*.

NOVAGARD
Performance Silicones | Woman Owned



*The values outlined in the following tables reflect testing that was conducted under laboratory conditions, actual results may vary. The information provided is not intended for use in preparing specifications. Please consult your sales representative for additional information.

NovaFlex®, NovaBond®, NovaPatch™, NovaFlash™, and Novagard®, along with associated logos and trade dress, are all trademarks of Novagard Solutions, Inc. Other trademarks are the property of their respective owners. Any unauthorized use is expressly prohibited. All rights reserved.





- Great for exterior and interior sealing
- Permanently flexible
- Will not shrink or crack
- Waterproof
- Mold/mildew resistant
- Excellent adhesion to most building substrates
- Will not sag or slump
- Completely cured within 48 hours
- Tack-free in 10 minutes
- Excellent tooling properties
- Will not freeze

Multi-Purpose and Metal Roof & Panel Adhesive Sealants

are a great everyday choice for glazing windows, structural backbedding, and constructing metal frames. These odorless, all-weather premium silicones adhere to a wide variety of substrates and dry to a durable, rubber-like solid impervious to UV light.

Multi-Purpose is also available in **FAST TACK** for Earlier Green Strength



CLASS 50 SEALANT

PRODUCT SPECIFICATIONS			
Physical Property	Test Method	Performance Range Type I - Class 35	Performance Range Type II - Class 50
Appearance		Paste (Various Colors)	Paste (Various Colors)
Viscosity	Brookfield #7 @ 10 rpm	3,500 - 7,000 poises	4,500 - 8,000 poises
Extrusion Rate	1/8" Orifice @ 50 psi	30 - 80 grams/minute	30 - 80 grams/minute
Skin Over Time	3/8" @ 50% RH & 77°F	5 - 10 minutes	5 - 10 minutes
Through Cure	3/8" @ 50% RH & 77°F	48 hours (14 days for OEM window applications)	48 hours (14 days for OEM window applications)

STANDARD COLOR CHART					
MX/MR150 Trans. MX170 Fast Tack	MX/MR100 White	MX/MR101 Blue White	MX104 Up White	MX/MR105 Antique White	MR3482 Sand
MX3461 Almond MR3461 Beige	MX140 Beige	MX/MR191 Sandstone	MX115 Dove Gray MR115 Light Gray	MX111 Gray	MX138 Dark Sand
MX159 Limestone MR156 Silver	MX3333 Clay MR3333 Sierra Tan	MX146 Sandstone MR146 Stone	MX3514 Gray MR3514 Gutter Gray	MX4103 Silver Metallic	MR118 Slate Gray
MX/MR157 Copper	MX/MR117 Gunmetal Gray	MX134 Terratone MR134 Med. Bronze	MX/MR196 Regal Red	MX182 Chutney MR182 Red	MX/MR171 Regal Blue
MX169 Forest Green MR169 Green	MX/MR168 Hartford Green	MX137 Royal Brown MR137 Brown	MX126 Graphite Gray MR126 Charcoal Gray	MX/MR120 Dark Bronze	
	MX/MR121 Lincoln Bronze	MX/MR194 Exterior Bronze	MX/MR110 Black		

MADE TO ORDER COLORS AVAILABLE UPON REQUEST.

TYPICAL PROPERTIES*			
Physical Property	Test Method	Typical Value Type I - Class 35	Typical Value Type II - Class 50
Specific Gravity		1.00 - 1.05	1.15 - 1.25
Tensile Strength	ASTM D412	140 - 200 psi	170 - 220 psi
Elongation	ASTM D412	500 - 650%	800 - 1,000%
Tear Resistance	ASTM D624	30 - 35 pli	30 - 35 pli
Hardness (Shore A)	ASTM D2240	15 - 25	20 - 30
Service Temperature		-40°F to 400°F (-40°C to 204°C)	-40°F to 400°F (-40°C to 204°C)
Joint Sealant Designation	ASTM C920	Type S Grade NS Class 35 Use NT, M, G, A, O	Type S Grade NS Class 50 Use NT, M, G, A, O
Adhesion Glass Aluminum Vinyl	ASTM D903	12 - 15 pli 10 - 14 pli 12 - 15 pli	12 - 15 pli 10 - 14 pli 12 - 15 pli

AVAILABLE IN: 10 ounce cartridges, 20 ounce sausage packs, 5 gallon pails, and 55 gallon drums.

SPECIFICATIONS: Meets or exceeds ASTM C-920, TT-S-001543A, and TT-S-230C. AAMA 803.3 (I), 805.2 C, 808.3.

USES: Window and door assembly. Glazing and backbedding. Sealing rivets, gutters, corner joints, and screw heads.

COMING SOON



We're combining two of Novagard's classic products – Multi-Purpose and Metal Roof & Panel Adhesive Sealants – into a single cartridge!

NovaFlex Pro Premium Adhesive Sealant

can handle any job and offers superior adhesion that bonds to most building materials without corroding. It's formulated for interior and exterior applications such as installing windows, doors, siding, and metal roofs and panels.

Engineered to be impervious to UV light, this neutral cure silicone won't break down over time. It will never chalk or fade, and resists dirt pickup. With extended shelf life and a 20 year limited warranty standard, NovaFlex Pro Premium Adhesive Sealant delivers the same great performance you've relied on from Novagard.



STANDARD COLOR CHART					

MADE TO ORDER COLORS AVAILABLE UPON REQUEST.

PRODUCT SPECIFICATIONS			
Physical Property	Test Method	Performance Range	Performance Range
Appearance		Paste (Various Colors)	Paste (Translucent)
Viscosity	Brookfield #7 @ 10 rpm	4,500-8,000 poises	3,500-7,000 poises
Extrusion Rate	1/8" Orifice @ 50 psi	30 - 80 grams/minute	30 - 80 grams/minute
Skin Over Time	3/8" @ 50% RH & 77°F	5 - 10 minutes	5 - 10 minutes
Through Cure	3/8" @ 50% RH & 77°F	48 hours (14 days for OEM window applications)	48 hours (14 days for OEM window applications)

TYPICAL PROPERTIES*			
Physical Property	Test Method	Typical Value	Typical Value
Specific Gravity		1.15 - 1.25	1.00 - 1.05
Tensile Strength	ASTM D412	170 - 220 psi	140 - 200 psi
Elongation	ASTM D412	800 - 1,000%	500 - 650%
Tear Resistance	ASTM D624	30 - 35 pli	30 - 35 pli
Hardness (Shore A)	ASTM D2240	20 - 30	15 - 25
Service Temperature		- 40°F to 400°F (- 40°C to 204°C)	- 40°F to 400°F (- 40°C to 204°C)
Joint Sealant Designation	ASTM C920	Type S Grade NS Class 50 Use NT, M, G, A, O	Type S Grade NS Class 35 Use NT, M, G, A, O
Adhesion Glass Aluminum Vinyl	ASTM D903	12 - 15 pli 10 - 14 pli 12 - 15 pli	12 - 15 pli 10 - 14 pli 12 - 15 pli



- “Liquid Shim” effect minimizes squeeze out and controls sealant thickness
- Complements most glazing rabbet designs
- Primer-less adhesion to most substrates

Created especially for glazing rabbet profile design windows,

Beaded Glazing / Bedding Compound

is a patented material combining neutral cure silicone with consistently sized spacer beads to provide a “liquid shim”, assuring precise compound thickness between glass and sash.

Also available in
FAST TACK
 for Earlier Green Strength



PRODUCT SPECIFICATIONS		
Physical Property	Test Method	Performance Range
Appearance		Paste (Translucent)
Viscosity	Brookfield #7 @ 10 rpm	3,500 - 7,000 poises
Skin Over Time	3/8" @ 50% RH & 77°F	4 - 10 minutes
Through Cure	3/8" @ 50% RH & 77°F	48 hours (14 days for OEM window applications)

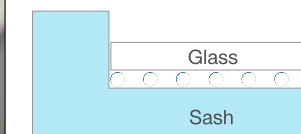
TYPICAL PROPERTIES*		
Physical Property	Test Method	Typical Value
Specific Gravity		1.05 - 1.10
Tensile Strength	ASTM D412	100 - 200 psi
Elongation	ASTM D412	400 - 650%
Tear Resistance	ASTM D624	30 - 35 pli
Hardness (Shore A)	ASTM D2240	20 - 30
Adhesion Glass Aluminum Wood	ASTM D903	12 - 15 pli 10 - 14 pli 12 - 15 pli

AVAILABLE IN: 10 ounce cartridges, 5 gallon pails, and 55 gallon drums

COLOR: Translucent in regular formulation and in *Fast Tack*

SPECIFICATIONS: Meets or exceeds the performance characteristics of AAMA 802.3 Type II, AAMA 803.3 Type I, and AAMA 805.2 Group C.

- BEAD SIZES:**
- SBC 30 = 0.025" - 0.035"
 - SBC 40 = 0.035" - 0.045"
 - SBC 50 = 0.045" - 0.055"



MINIMIZE SQUEEZE-OUT: Spacer beads support the glass and maintain uniform glazing depth during cure for tighter manufacturing tolerances, higher quality, and fewer warranty claims.

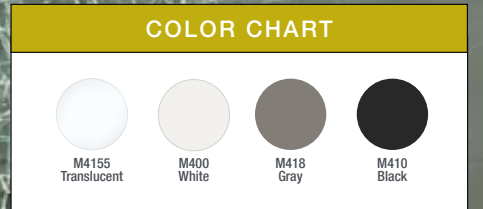


- Neutral cure silicone
- High elongation
- Non-corrosive formulation
- Excellent chemical resistance
- High tensile strength
- Deep section cure
- Excellent adhesion to window and door substrates
- Utilized in window fenestration for impact resistant systems
- Miami-Dade approved
- Part of an impact resistant window system

A cost-effective alternative to competitive 2-part sealants, structural tapes, and windshield urethanes,

High Impact Glazing Sealant

is a one-part neutral cure silicone sealant/adhesive with excellent adhesion to numerous substrates, formulated for impact protection and blast resistance.



PRODUCT SPECIFICATIONS		
Physical Property	Test Method	Performance Range
Appearance		Paste (Various Colors)
Viscosity	Brookfield #7 @ 10 rpm	5,000 - 15,000 poises
Extrusion Rate	Novagard 10-10-50	40 grams/minute minimum
Skin Over Time	3/8" @ 50% RH & 75°F	5 - 15 minutes
Through Cure	3/8" @ 50% RH & 75°F	48 hours (28 days for OEM window applications)

TYPICAL PROPERTIES*		
Physical Property	Test Method	Typical Value
Slump (Flow)	ASTM D2202	0.3" maximum
Specific Gravity		1.00 - 1.50
Tensile Strength	ASTM D412	300 - 500 psi
Elongation	ASTM D412	300 - 600%
Hardness (Shore A)	ASTM D2240	20 minimum
Joint Movement	ASTM C920	+/- 50
Adhesion Glass PVC Wood	ASTM D903 7 days @ 50% RH & 75°F	20 pli minimum 20 pli minimum 20 pli minimum

AVAILABLE IN: 10 ounce cartridges

SPECIFICATIONS: Meets or exceeds the performance characteristics of ASTM C-920, AAMA 802.3, 805.2, 808.3, TT-S-001543A, and TT-S-230C

USES: Window and door frame assembly and glazing/backbedding for impact-resistant window and door systems.





- Low reactivity
- Excellent chemical resistance
- Excellent UV resistance
- Permanently flexible
- Deep section cure
- Excellent adhesion
- High elongation

Designed to protect the IG secondary seal from attack and degradation,

Ultra-Low Migration Glazing Sealant

is the premium paste you need to reduce premature failure and warranty calls.



COLOR CHART			
MXG150 Translucent	MXG100 White	MXG132 Earhtone	MXG110 Black

PRODUCT SPECIFICATIONS		
Physical Property	Test Method	Performance Range
Appearance		Paste (Various Colors)
Viscosity	Brookfield #7 @ 10 rpm	7,000 - 15,000 poises
Extrusion Rate	1/8" Orifice @ 50 psi	10 - 40 grams/minute
Skin Over Time	3/8" @ 50% RH & 77°F	5 - 10 minutes
Through Cure	3/8" @ 50% RH & 77°F	48 hours (14 days for OEM window applications)

TYPICAL PROPERTIES*		
Physical Property	Test Method	Typical Value
Specific Gravity		1.00 - 1.05
Tensile Strength	ASTM D412	200 - 250 psi
Elongation	ASTM D412	400 - 450%
Tear Resistance	ASTM D624	20 - 25 pli
Hardness (Shore A)	ASTM D2240	15 - 25
Adhesion Glass Aluminum Wood	ASTM D903	13 - 17 pli 13 - 17 pli 13 - 17 pli

AVAILABLE IN: 10 ounce cartridges, 20 ounce sausage packs, 5 gallon pails, and 55 gallon drums.

SPECIFICATIONS: Meets or exceeds the performance characteristics of AAMA 802.3(I), 805.2C, and 808.3.

USES: Specifically formulated to protect the IG secondary seal, NovaFlex ULM Glazing reduces field failures and warranty claims.



- High tensile strength
- Low reactivity
- Developed for systems looking to achieve Florida Product Approval, HVHZ, or Miami Dade NOA
- Excellent chemical resistance
- Excellent UV resistance
- Deep section cure
- Excellent adhesion to various substrates
- High elongation

Engineered to prevent any harm from coming to the IG secondary seal,

Ultra-Low Migration High Impact Glazing Sealant

develops a sure bond to most substrates and offers extremely high tensile strength to provide the longest lasting seal possible for high impact windows.



COLOR CHART



PRODUCT SPECIFICATIONS

Physical Property	Test Method	Performance Range
Appearance		Paste (Various Colors)
Viscosity	Brookfield #7 @ 10 rpm	5,000 - 15,000 poises
Extrusion Rate	1/8" Orifice @ 50 psi	30 - 60 grams/minute
Skin Over Time	3/8" @ 50% RH & 77°F	5 - 10 minutes
Through Cure	3/8" @ 50% RH & 77°F	48 hours (28 days for OEM window applications)

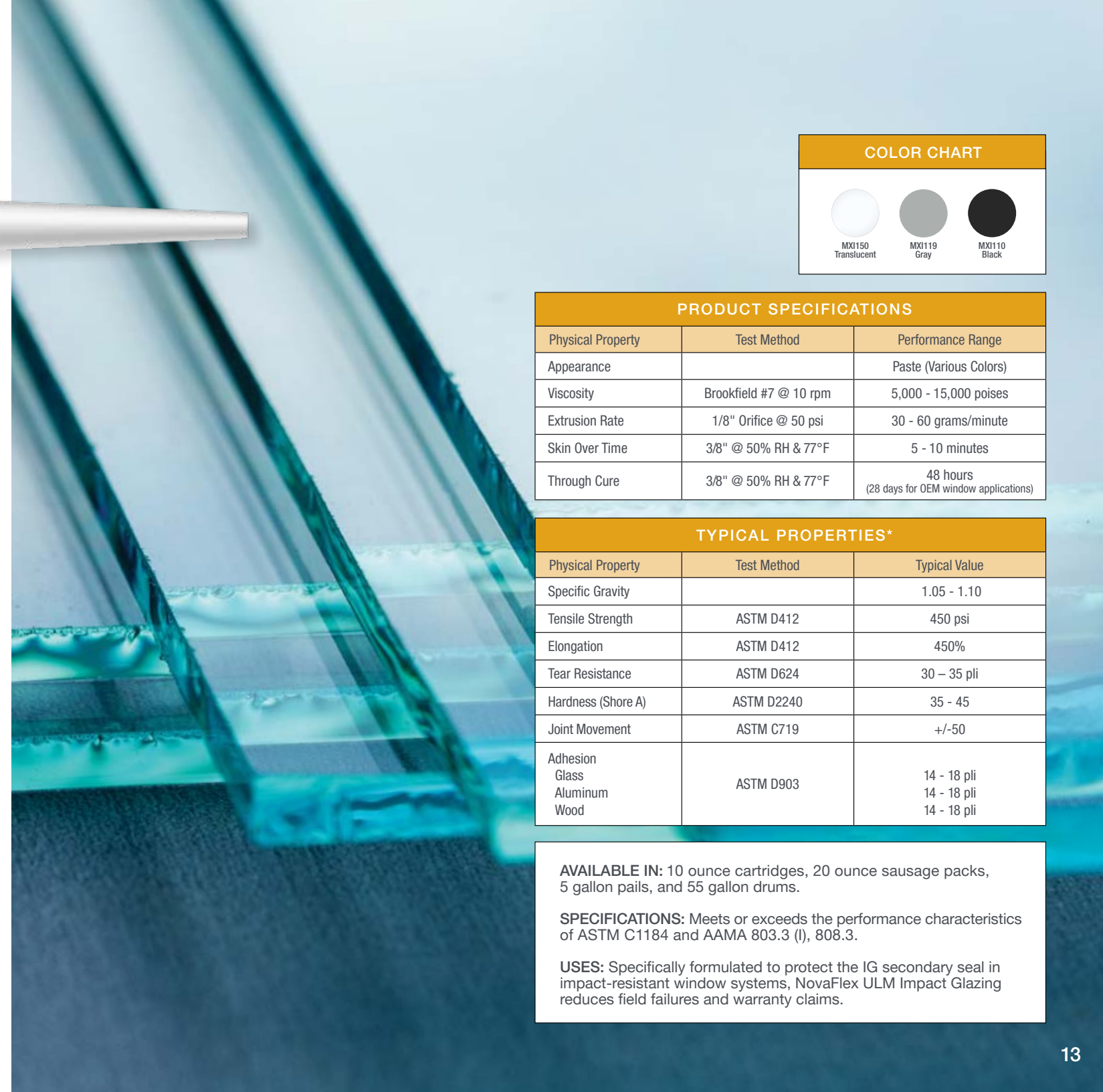
TYPICAL PROPERTIES*

Physical Property	Test Method	Typical Value
Specific Gravity		1.05 - 1.10
Tensile Strength	ASTM D412	450 psi
Elongation	ASTM D412	450%
Tear Resistance	ASTM D624	30 - 35 pli
Hardness (Shore A)	ASTM D2240	35 - 45
Joint Movement	ASTM C719	+/-50
Adhesion Glass Aluminum Wood	ASTM D903	14 - 18 pli 14 - 18 pli 14 - 18 pli

AVAILABLE IN: 10 ounce cartridges, 20 ounce sausage packs, 5 gallon pails, and 55 gallon drums.

SPECIFICATIONS: Meets or exceeds the performance characteristics of ASTM C1184 and AAMA 803.3 (I), 808.3.

USES: Specifically formulated to protect the IG secondary seal in impact-resistant window systems, NovaFlex ULM Impact Glazing reduces field failures and warranty claims.



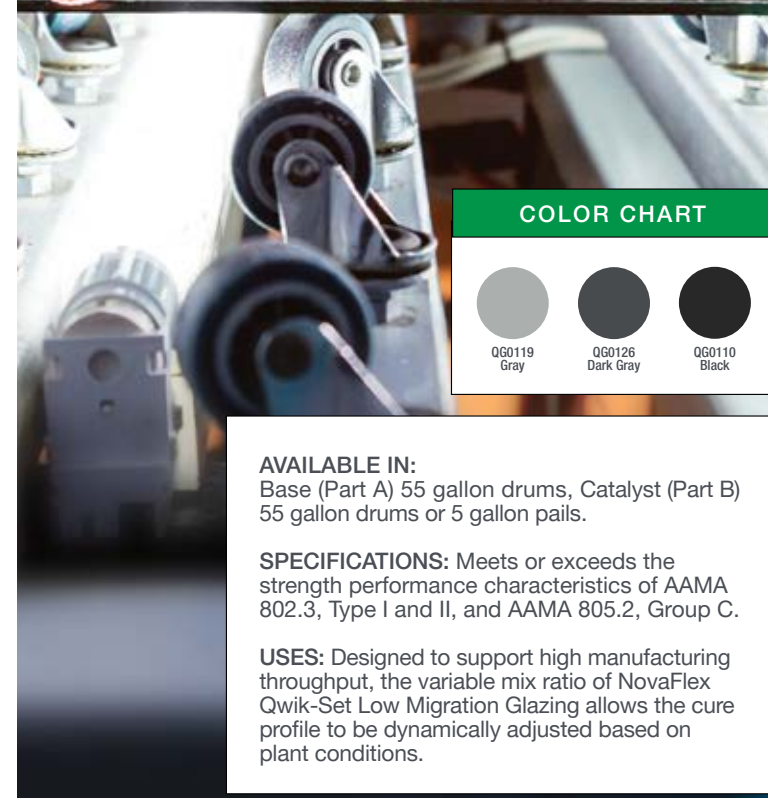
- Rapid cure to increase efficiencies and help speed up production lines
- Low migration to protect and help prevent breakdown of the secondary sealant
- Excellent primerless adhesion to most substrates and accessories
- Prevents premature failures and callbacks
- Void-free filling of sealant joint
- Squeeze-out cleanup that's quick and easy
- Long-term resistance to natural weathering



Allowing for movement of assemblies within minutes of application without glass shifting,

Qwik-Set Low Migration Glazing Sealant

is a two-component, neutral cure silicone engineered to protect and prevent breakdown of the secondary sealant while rapidly building green strength for bedding and glazing of glass in residential and commercial window designs.



TYPICAL UNCURED PROPERTIES*		
Physical Property	Base (Part A)	Catalyst (Part B)
Appearance	Paste (QGL000A Off White)	Paste (QG0126B Dark Gray) Paste (QG0110B Black) Paste (QG0119B Gray)
Viscosity	1,500 - 3,500 poises	2,000 - 4,000 poises
Specific Gravity	1.33 - 1.37	1.03 - 1.07

MIX RATIO BY WEIGHT*					
Physical Property	Base to 1 gm of Catalyst				
Base Ratio by Volume	8:1	9:1	10:1	11:1	12:1
Base Weight (gm)	10.3	11.6	12.9	14.1	15.4

MIXED PROPERTIES*	
Physical Property	Typical Value
Specific Gravity	1.31
Sag, Boeing Jig	< 0.1

TYPICAL CURED PROPERTIES (10:1 by volume)*		
Physical Property	Test Method	Typical Value
Color	-	Dark Gray (QG0126) or Black (QG0110) or Gray (QG0119)
Tensile Strength	ASTM D412	225 - 325 psi
Elongation	ASTM D412	125 - 225%
Hardness (Shore A)	ASTM D2240	40 - 50
Peel Strength Aluminum Glass PVC PVDF Acrylic	ASTM C974	7-Day Cure >18.0 lbf/in >19.0 lbf/in >18.0 lbf/in >18.0 lbf/in >15.0 lbf/in
Green Strength (Glass to Aluminum) 15 minutes 30 minutes	ASTM C1135	26 psi 45 psi

TYPICAL CURE RATES*			
Base Ratio by Volume	8:1	10:1	12:1
Typical Snap Time	3 - 5 minutes	6 - 8 minutes	9 - 11 minutes
Typical Tack-Free Time	7 - 11 minutes	11 - 15 minutes	15 - 19 minutes

AVAILABLE IN:
Base (Part A) 55 gallon drums, Catalyst (Part B) 55 gallon drums or 5 gallon pails.

SPECIFICATIONS: Meets or exceeds the strength performance characteristics of AAMA 802.3, Type I and II, and AAMA 805.2, Group C.

USES: Designed to support high manufacturing throughput, the variable mix ratio of NovaFlex Qwik-Set Low Migration Glazing allows the cure profile to be dynamically adjusted based on plant conditions.



After three decades of producing window glazing,
our silicone expertise will now go into our

IG Secondary Sealant

to offer you a complete system of compatible sealants and glazes to maximize the manufacturing process and performance of your windows.

Novagard's IG Secondary Sealant will be developed in both 1-part and 2-part formulations. It will be permanently flexible for long life, with no brittleness or cracking. UV resistant, it will offer excellent durability when exposed to moisture. This silicone will provide long-term adhesion to a wide range of substrates including coated and reflective glasses, aluminum and steel spacers, and a variety of plastics.



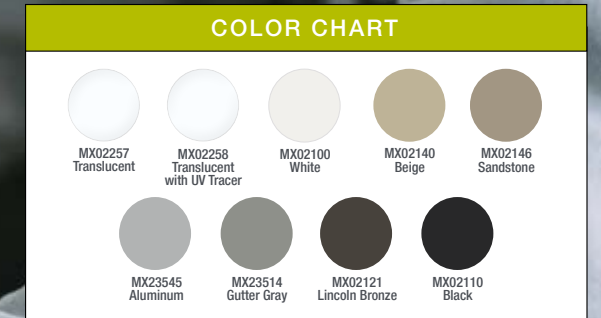


- Low odor
- Semi self leveling
- Neutral cure
- Quick drying
- Permanently flexible

Ideal for applications requiring the coating to flow into small crevices and hard to reach areas,

Seam Sealer

is a semi-self-leveling liquid that cures to a rubber-like solid which will not crack or drop out of joints.



PRODUCT SPECIFICATIONS

Physical Property	Test Method	Performance Range
Appearance		Semi-Self-Leveling Fluid (Various Colors)
Viscosity	RVT Spindle #7 @ 20 rpm RVT Spindle #7 @ 10 rpm	700 - 1,100 poises 1,000 - 1,350 poises
Skin Over Time	3/8" @ 50% RH & 77°F	30 minutes max
Through Cure	3/8" @ 50% RH & 77°F	24 - 48 hours

TYPICAL PROPERTIES*

Physical Property	Test Method	Typical Value
Specific Gravity		1.05 - 1.20
Tensile Strength	ASTM D412	200 psi
Elongation	ASTM D412	250%
Hardness (Shore A)	ASTM D2240	15 -25
Adhesion Glass Aluminum	ASTM D903	>15 pli >15 pli

AVAILABLE IN: 10 ounce cartridges, 3 ounce squeeze tubes, and 55 gallon drums.

SPECIFICATIONS: Meets or exceeds the performance characteristics of AAMA 803.3, Type II.

USES: Sealing rivets, gutters, corner joints, and screw heads.

APPLICATION NOTE: Due to the flowable nature of NovaFlex Seam Sealer, it may not be suitable for use on vertical joints unless tooled immediately after application. Consider NovaFlex Void & Cavity Filler (Page 20) for vertical applications. Consult your sales representative.








- Low odor
- Low reactivity
- Excellent chemical resistance
- Deep section neutral cure
- Permanently flexible

The best way to reinforce your frame with a rubber-like solid that will not crack or fall out of joints,

Void and Cavity Filler

is a non-sagging, non-corrosive, single-component silicone paste that cures upon exposure to atmospheric moisture and remains flexible forever.



COLOR CHART		
		
MXV150 Translucent	MXV100 White	MXV110 Black

PRODUCT SPECIFICATIONS		
Physical Property	Test Method	Performance Range
Appearance		Paste (Various Colors)
Viscosity	Brookfield #7 @ 10 rpm	5,000 - 15,000 poises
Extrusion Rate	1/8" Orifice @ 50 psi	10 - 40 grams/minute
Skin Over Time	3/8" @ 50% RH & 77°F	5 - 10 minutes
Through Cure	3/8" @ 50% RH & 77°F	48 hours (14 days for OEM window applications)

TYPICAL PROPERTIES*		
Physical Property	Test Method	Typical Value (Class +100/-50)
Specific Gravity		1.00 - 1.10
Tensile Strength	ASTM D412	200 - 250 psi
Elongation	ASTM D412	400 - 450%
Tear Resistance	ASTM D624	20 - 25 pli
Hardness (Shore A)	ASTM D2240	15 - 25
UV Resistance	ASTM G154/2,000 hours	Pass

AVAILABLE IN: 10 ounce cartridges, 20 ounce sausage packs, 5 gallon pails, and 55 gallon drums.

SPECIFICATIONS: Meets or exceeds the performance characteristics of AAMA 803.3(I).

USES: Sealing rivets, corner joints, and screw heads. Mounting corner keys and acting as a reinforcing sealant during assembly. Filling internal voids in assembled frames.



**AVAILABLE
NOV 2024**



- Can be painted in 30 min
- 24 month shelf life
- UV resistant
- Safe to use indoors - no odor
- Can be applied in all weather -10°F to 122°F
- Permanently flexible
- Will not sag or slump
- Excellent tooling properties
- Excellent weathering properties
- No shrinking or cracking
- Resists dirt pickup
- Applies vertically and overhead
- Bonds to a variety of substrates without priming

The premium choice for assembly of wooden windows,

NovaBond Pro Hybrid Sealant

provides high strength adhesion for ultimate sturdiness, and when cured, achieves a surface hardness consistent with wood and is paintable in 30 minutes.



PRODUCT SPECIFICATIONS		
Physical Property	Test Method	Performance Range
Appearance		Paste (Various Colors)
Viscosity	Brookfield #7 @ 10 rpm	2,000 - 7,000 poises
Extrusion Rate	1/8" Orifice @ 50 psi	≥ 50 grams/minute
Skin Over Time	3/8" @ 50% RH & 77°F	10 - 45 minutes
Shelf Life		24 months

TYPICAL PROPERTIES*		
Physical Property	Test Method	Typical Value
Specific Gravity		1.40- 1.50
Tensile Strength	ASTM D412	200 - 325 psi
Elongation	ASTM D412	250 - 475%
Hardness (Shore A)	ASTM D2240	45 - 55
Through Cure	3/8" @ 50% RH & 77°F	7 days
Adhesion		
Glass		>15 pli
Aluminum		>20 pli
Wood	ASTM C794	>15 pli
PVC		>15 pli
PVDF		>25 pli
Concrete		>15 pli
Joint Movement	ASTM C719	+/- 35
UV Exposure	ASTM G154 (2,000 hours UV-A)	Pass

STANDARD COLOR CHART

NBX100 White	NBX105 Antique White	NBX107 Cream	NBX145 Canvas	NBX3431 Cobblestone
NBX140 Beige	NBX146 Sandstone	NBX134 Terratone	NBX120 Dark Bronze	NBX110 Black

MADE TO ORDER COLORS AVAILABLE UPON REQUEST.

AVAILABLE IN: 10 ounce cartridges, 20 ounce sausage packs, and 55 gallon drums.

SPECIFICATIONS: Meets or exceeds the performance characteristics of ASTM C-920, Type S, Grade NS, Class 35, use NT, M, G, A, and O. AAMA 802.3 (II), 803.3 (I), 805.2 C, 808.3 (I).

USES: Window and door assembly. Glazing and backbedding.

Do glazing or backbedding	Build metal frames	Easily apply a "liquid shim"	Assure top tensile strength	Protect window components	Protect high impact windows	Get higher throughput	Seal seams and small crevices	Reinforce with no corrosion	Get a strong yet paintable bond
									
Multi-Purpose Adhesive Sealant	Metal Roof & Panel Adhesive Sealant	Beaded Glazing/Bedding Compound	High Impact Glazing Sealant	Ultra-Low Migration Glazing Sealant	Ultra-Low Migration High Impact Glazing Sealant	Qwik-Set Low Migration 2-Part Glazing Sealant	Seam Sealer	Void and Cavity Filler	Pro Hybrid Sealant
APPEARANCE Paste Various Colors	APPEARANCE Paste Various Colors	APPEARANCE Paste Translucent	APPEARANCE Paste Various Colors	APPEARANCE Paste Various Colors	APPEARANCE Paste Various Colors	APPEARANCE Paste Part A: Off White Part B: Various Colors	APPEARANCE Semi-Self Leveling Fluid Various Colors	APPEARANCE Paste Various Colors	APPEARANCE Paste Various Colors
VISCOSITY (Poises) (Brookfield #7 @ 10 rpm) 3,500 - 7,000 Type II/Class 35 4,500 - 8,000 Type II/Class 50	VISCOSITY (Poises) (Brookfield #7 @ 10 rpm) 3,500 - 7,000 Type II/Class 35 4,500 - 8,000 Type II/Class 50	VISCOSITY (Poises) (Brookfield #7 @ 10 rpm) 3,500 - 7,000	VISCOSITY (Poises) (Brookfield #7 @ 10 rpm) 5,000 - 15,000	VISCOSITY (Poises) (Brookfield #7 @ 10 rpm) 7,000 - 15,000	VISCOSITY (Poises) (Brookfield #7 @ 10 rpm) 5,000 - 15,000	VISCOSITY (Poises) (HB #6 @ 20 rpm) 1,500 - 3,500 Part A Base 2,000 - 4,000 Part B Catalyst	VISCOSITY (Poises) (RVT Spindle #7) 700 - 1,100 @ 20 rpm 1,000 - 1,350 @ 10 rpm	VISCOSITY (Poises) (Brookfield #7 @ 10 rpm) 5,000 - 15,000	VISCOSITY (Poises) (Brookfield #7 @ 10 rpm) 2,000 - 7,000
EXTRUSION RATE (grams/minute) 30 - 80 1/8" Orifice @ 50 psi	EXTRUSION RATE (grams/minute) 30 - 80 1/8" Orifice @ 50 psi	EXTRUSION RATE (grams/minute) n/a	EXTRUSION RATE (grams/minute) 40 Novagard 10-10-50	EXTRUSION RATE (grams/minute) 10 - 40 1/8" Orifice @ 50 psi	EXTRUSION RATE (grams/minute) 30 - 60 1/8" Orifice @ 50 psi	EXTRUSION RATE (grams/minute) n/a	EXTRUSION RATE (grams/minute) n/a	EXTRUSION RATE (grams/minute) 10 - 40 1/8" Orifice @ 50 psi	EXTRUSION RATE (grams/minute) ≥ 50 1/8" Orifice @ 50 psi
SKIN OVER TIME (3/8" @ 50% RH & 77°F) 5 - 10 min	SKIN OVER TIME (3/8" @ 50% RH & 77°F) 5 - 10 min	SKIN OVER TIME (3/8" @ 50% RH & 77°F) 4 - 10 min	SKIN OVER TIME (3/8" @ 50% RH & 75°F) 5 - 15 min	SKIN OVER TIME (3/8" @ 50% RH & 77°F) 5 - 10 min	SKIN OVER TIME (3/8" @ 50% RH & 77°F) 5 - 10 min	TACK FREE TIME (3/8" @ 50% RH & 77°F) 7 - 19 min	SKIN OVER TIME (3/8" @ 50% RH & 77°F) <30 min	SKIN OVER TIME (3/8" @ 50% RH & 77°F) 5 - 10 min	SKIN OVER TIME (3/8" @ 50% RH & 77°F) 10 - 45 min
THROUGH CURE (3/8" @ 50% RH & 77°F) 48 hours (14 days for OEM window applications)	THROUGH CURE (3/8" @ 50% RH & 77°F) 48 hours (14 days for OEM window applications)	THROUGH CURE (3/8" @ 50% RH & 77°F) 48 hours (14 days for OEM window applications)	THROUGH CURE (3/8" @ 50% RH & 75°F) 48 hours (28 days for OEM window applications)	THROUGH CURE (3/8" @ 50% RH & 77°F) 48 hours (14 days for OEM window applications)	THROUGH CURE (3/8" @ 50% RH & 77°F) 48 hours (28 days for OEM window applications)	SNAP TIME (3/8" @ 50% RH & 77°F) 3 - 11 min	THROUGH CURE (3/8" @ 50% RH & 77°F) 24 - 48 hrs	THROUGH CURE (3/8" @ 50% RH & 77°F) 48 hours (14 days for OEM window applications)	THROUGH CURE (3/8" @ 50% RH & 77°F) 7 days
SLUMP (Flow) no slump	SLUMP (Flow) no slump	SLUMP (Flow) no slump	SLUMP (Flow) (ASTM D412) 0.3" maximum	SLUMP (Flow) no slump	SLUMP (Flow) no slump	SLUMP (Flow) no slump	SLUMP (Flow) n/a	SLUMP (Flow) no slump	SLUMP (Flow) no slump
SPECIFIC GRAVITY 1.00 - 1.05 Type I/Class 35 1.15 - 1.25 Type II/Class 50	SPECIFIC GRAVITY 1.00 - 1.05 Type I/Class 35 1.15 - 1.25 Type II/Class 50	SPECIFIC GRAVITY 1.05 - 1.10	SPECIFIC GRAVITY 1.00 - 1.50	SPECIFIC GRAVITY 1.00 - 1.05	SPECIFIC GRAVITY 1.05 - 1.10	SPECIFIC GRAVITY 1.33 - 1.37 Part A Base 1.03 - 1.07 Part B Catalyst	SPECIFIC GRAVITY 1.05 - 1.20	SPECIFIC GRAVITY 1.00 - 1.10	SPECIFIC GRAVITY 1.40 - 1.50
TENSILE STRENGTH (ASTM D412) 140 - 200 psi Type I/Class 35 170 - 220 psi Type II/Class 50	TENSILE STRENGTH (ASTM D412) 140 - 200 psi Type I/Class 35 170 - 220 psi Type II/Class 50	TENSILE STRENGTH (ASTM D412) 100 - 200 psi	TENSILE STRENGTH (ASTM D412) 300 - 500 psi	TENSILE STRENGTH (ASTM D412) 200 - 250 psi	TENSILE STRENGTH (ASTM D412) 450 psi	TENSILE STRENGTH (ASTM D412) 225 - 325 psi	TENSILE STRENGTH (ASTM D412) 200 psi	TENSILE STRENGTH (ASTM D412) 200 - 250 psi	TENSILE STRENGTH (ASTM D412) 200 - 325 psi
ELONGATION (ASTM D412) 500 - 650% Type I/Class 35 800 - 1,000% Type II/Class 50	ELONGATION (ASTM D412) 500 - 650% Type I/Class 35 800 - 1,000% Type II/Class 50	ELONGATION (ASTM D412) 400 - 650%	ELONGATION (ASTM D412) 300 - 600%	ELONGATION (ASTM D412) 400 - 450%	ELONGATION (ASTM D412) 450%	ELONGATION (ASTM D412) 125 - 225%	ELONGATION (ASTM D412) 250%	ELONGATION (ASTM D412) 400 - 450%	ELONGATION (ASTM D412) 250 - 475%
TEAR RESISTANCE (ASTM D624) 30 - 35 pli	TEAR RESISTANCE (ASTM D624) 30 - 35 pli	TEAR RESISTANCE (ASTM D624) 30 - 35 pli	TEAR RESISTANCE (ASTM D624) -	TEAR RESISTANCE (ASTM D624) 20 - 25 pli	TEAR RESISTANCE (ASTM D624) 30 - 35 pli	TEAR RESISTANCE (ASTM D624) -	TEAR RESISTANCE (ASTM D624) -	TEAR RESISTANCE (ASTM D624) 20 - 25 pli	TEAR RESISTANCE (ASTM D624) -
HARDNESS (SHORE A) (ASTM D2240) 15 - 25 Type I/Class 35 20 - 30 Type II/Class 50	HARDNESS (SHORE A) (ASTM D2240) 15 - 25 Type I/Class 35 20 - 30 Type II/Class 50	HARDNESS (SHORE A) (ASTM D2240) 20 - 30	HARDNESS (SHORE A) (ASTM D2240) 20 minimum	HARDNESS (SHORE A) (ASTM D2240) 15 - 25	HARDNESS (SHORE A) (ASTM D2240) 35 - 45	HARDNESS (SHORE A) (ASTM D2240) 40 - 50	HARDNESS (SHORE A) (ASTM D2240) 15 - 25	HARDNESS (SHORE A) (ASTM D2240) 15 - 25	HARDNESS (SHORE A) (ASTM D2240) 45 - 55
SERVICE TEMPERATURE -40°F to 400°F (-40°C to 204°C)	SERVICE TEMPERATURE -40°F to 400°F (-40°C to 204°C)	SERVICE TEMPERATURE -40°F to 400°F (-40°C to 204°C)	SERVICE TEMPERATURE -40°F to 400°F (-40°C to 204°C)	SERVICE TEMPERATURE -40°F to 400°F (-40°C to 204°C)	SERVICE TEMPERATURE -40°F to 400°F (-40°C to 204°C)	SERVICE TEMPERATURE -40°F to 400°F (-40°C to 204°C)	SERVICE TEMPERATURE -40°F to 400°F (-40°C to 204°C)	SERVICE TEMPERATURE -40°F to 400°F (-40°C to 204°C)	SERVICE TEMPERATURE -40°F to 176°F (-40°C to 80°C)
APPLICATION TEMPERATURE -20°F to 160°F (-29°C to 71°C)	APPLICATION TEMPERATURE -20°F to 160°F (-29°C to 71°C)	APPLICATION TEMPERATURE -20°F to 160°F (-29°C to 71°C)	APPLICATION TEMPERATURE -20°F to 160°F (-29°C to 71°C)	APPLICATION TEMPERATURE -20°F to 160°F (-29°C to 71°C)	APPLICATION TEMPERATURE -20°F to 160°F (-29°C to 71°C)	APPLICATION TEMPERATURE -20°F to 160°F (-29°C to 71°C)	APPLICATION TEMPERATURE -20°F to 160°F (-29°C to 71°C)	APPLICATION TEMPERATURE -20°F to 160°F (-29°C to 71°C)	APPLICATION TEMPERATURE -10°F to 122°F (-23.3°C to 50°C)
AAMA SPECIFICATIONS 803.3 (I) 805.2 C 808.3	AAMA SPECIFICATIONS 803.3 (I) 805.2 C 808.3	AAMA SPECIFICATIONS 802.3 (II) 803.3 (I) 805.2 C	AAMA SPECIFICATIONS 802.3 805.2 808.3	AAMA SPECIFICATIONS 802.3 (I) 805.2 C 808.3	AAMA SPECIFICATIONS 803.3 (I) 808.3	AAMA SPECIFICATIONS 802.3 (I) (II) 805.2 C	AAMA SPECIFICATIONS 803.3 (II)	AAMA SPECIFICATIONS 803.3 (I)	AAMA SPECIFICATIONS 802.3 (II) 803.3 (I) 805.2 C 808.3 (I)

We're ready to talk when you are.

If you have any questions about our silicone sealants, or any manufacturing challenges you're not sure are being met by what you see here, please call us right now. You'll find the only thing that can surpass the performance of our quality products is the performance of our quality people.

(216) 881-8111 | (800) 380-0138 | novagard.com