

# NOVABOND<sup>®</sup>

## Hybrid Construction Sealant



- Excellent adhesion
- Permanently flexible
- Paintable in 1 hour
- Extrudes down to -10°F
- Adheres to:
  - Metal
  - Wood
  - Masonry
  - PVC
  - PVDF
  - Asphalt Shingles
  - Common Construction Materials



NBP100  
WHITE



NBP105  
ANTIQUE WHITE



NBP107  
CANVAS



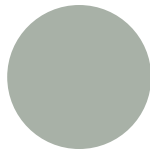
NBP140  
BEIGE



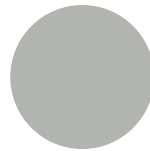
NBP191  
MONTEREY SAND



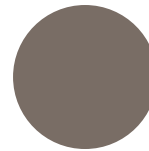
NBP146  
SANDSTONE



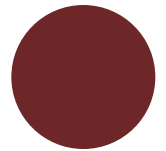
NBP159  
LIMESTONE



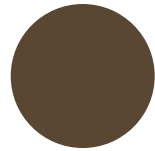
NBP3515  
CAPE COD GRAY



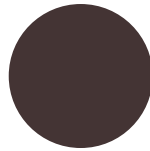
NBP134  
TERRATONE



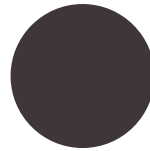
NBP182  
RED ROCK



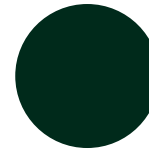
NBP193  
COCOA BEAN



NBP194  
EXTERIOR BRONZE



NBP120  
DARK BRONZE



NBP162  
FOREST GREEN



NBP110  
BLACK

# NOVABOND<sup>®</sup> TX<sup>ture</sup>

## Textured Hybrid Construction Sealant

Also available in a textured formula to complement mortar, brick, stone, concrete, asphalt, and stucco applications.



Available in standard mortar colors: White, Beige, Limestone, Cape Cod Gray, Dark Bronze, and Black.  
Contact your representative for current color availability.

# NOVABOND

## Hybrid Construction Sealant

### Textured Hybrid Construction Sealant

#### Product Specifications

Physical Property	Test Method	Smooth Performance Range	TXtUre Performance Range
Appearance		Paste (Various Colors)	Textured Paste (Various Colors)
Viscosity	Brookfield #7 @ 10 rpm	≥ 3,000 poises	≥ 3,000 poises
Extrusion Rate	1/8" Orifice @ 50 psi	≥ 50 grams/minute	< 100 grams/minute
Skin Over Time	3/8" @ 50% RH & 77°F	10-45 Minutes	10-45 Minutes
Through Cure	3/8" @ 50% RH & 77°F	7 days	7 days



- Excellent adhesion
- Permanently flexible
- Paintable in 1 hour
- Extrudes down to -10°F
- Adheres to:

- Metal
- Wood
- Masonry
- PVC
- PVDF
- Asphalt Shingles
- Common Construction Materials

#### Typical Properties\*

Physical Property	Test Method	Smooth Typical Value	TXtUre Typical Value
Specific Gravity		1.40- 1.50	1.40 - 1.50
Tensile Strength	ASTM D412	200 psi	220 psi
Elongation	ASTM D412	400%	200%
Shore Hardness	ASTM D2240	40+/- 5	45 +/- 5
Adhesion			
Glass		13 pli	15 pli
Aluminum	ASTM D903	15 pli	15 pli
Wood		15 pli	15 pli
PVC		14 pli	14 pli
Joint Movement	ASTM C719	+/- 35	+/- 25
UV Exposure	ASTM G154 (2,000 hours UV-A)	Pass	
Shelf Life	-	18 months	12 months

\*The values outlined reflect testing that was conducted under laboratory conditions, actual results may vary. The information provided in the above table is not intended for use in preparing specifications. Please consult manufacturer for additional info.

#### Paintable in 1 Hour

- Permanently flexible
- Will not shrink or crack
- Waterproof
- Mold/Mildew resistant
- UV resistant

#### Interior and Exterior Applications

- Excellent adhesion to most building substrates
- Completely cured within 5-7 days
- Will not sag or slump
- Tack-free in 10-45 minutes

#### Easily Gunned at all Temperatures

- Weatherproof plastic cartridges with removable tips
- Excellent tooling properties

#### VOC Compliant in all 50 States (Green Building Compliant)

- California Proposition 65 Compliant
- Low odor
- Solvent free

#### AAMA Verified for Window Installs (smooth paste)

- Available in all major siding, trim coil, and window manufacturer colors
- Will not freeze

#### Professional Grade

## NOVAGARD

5109 Hamilton Avenue, Cleveland, OH 44114 USA  
(216) 881-8111 | (800) 380-0138 | (216) 881-6977 F  
novagard.com

ISO 9001:2015 QMS (with Design), IATF 16949:2016 QMS (with Design)  
Certified Women's Business Enterprise



NovaBond is proudly made in Cleveland, OH  
Effective Date: Jan 2022-v2.7