

NOVAFLEX^{SILICONE}

Multi-Purpose Adhesive Sealant



- Excellent adhesion
- Permanently flexible
- Extrudes to -20°F
- Adheres to:
 - Metals
 - Wood
 - Masonry
 - PVC
 - PVDF
 - Common Construction Materials



MX150
TRANSLUCENT



MX101
BLUE WHITE



MX104
UP WHITE



MX100
WHITE



MX105
ANTIQUE WHITE



MX107
CANVAS



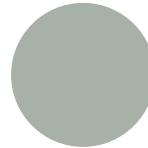
MX143
ALMOND



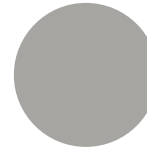
MX140
BEIGE



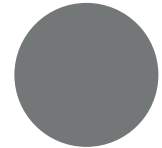
MX138
DARK SAND



MX159
LIMESTONE



MX111
GRAY



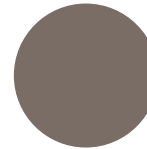
MX112
DARK GRAY



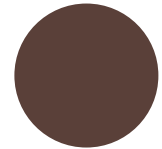
MX146
SANDSTONE



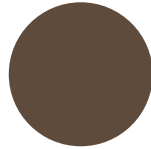
MX141
TAN



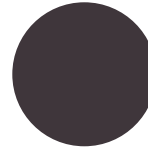
MX134
TERRATONE



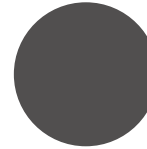
MX130
IMPERIAL BROWN



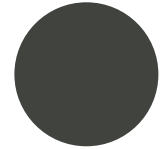
MX132
EARTHTONE



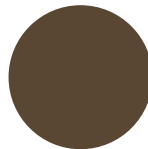
MX120
DARK BRONZE



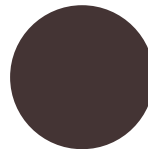
MX121
LINCOLN
BRONZE



MX122
BRONZE



MX193
COCOA BEAN



MX194
EXT BRONZE



MX110
BLACK

NOVAFLEX^{SILICONE}

Multi-Purpose Adhesive Sealant

Product Specifications

Physical Property	Test Method	Performance Range Type I - Class 35	Performance Range Type II - Class 50
Appearance		Paste (Various Colors)	Paste (Various Colors)
Viscosity	Brookfield #7 @ 10 rpm	3,500-7,000 poises	4,500-8,000 poises
Extrusion Rate	1/8" Orifice @ 50 psi	30 - 80 grams/minute	30 - 80 grams/minute
Skin Over Time	3/8" @ 50% RH & 77°F	5 - 10 minutes	5 - 10 minutes
Through Cure	3/8" @ 50% RH & 77°F	48 hours (14 days for OEM window applications)	48 hours (14 days for OEM window applications)



- Excellent adhesion
- Permanently flexible
- Extrudes to -20°F
- Adheres to:
 - Metals
 - Wood
 - Masonry
 - PVC
 - PVDF
 - Common Construction Materials

Typical Properties*

Physical Property	Test Method	Typical Value Type I - Class 35	Typical Value Type II - Class 50
Specific Gravity		1.00 - 1.05	1.15 - 1.25
Tensile Strength	ASTM D412	140 - 200 psi	170 - 220 psi
Elongation	ASTM D412	500 - 650%	800 - 1000%
Tear Resistance	ASTM D624	30 - 35 pli	30 - 35 pli
Shore Hardness	ASTM D2240	20 +/- 5	25 +/- 5
Service Temperature		- 40°F to 400°F (- 40°C to 204°C)	- 40°F to 400°F (- 40°C to 204°C)
Joint Sealant Designation	ASTM C920	Type S Grade NS Class 35 Use NT, M, G, A, O	Type S Grade NS Class 50 Use NT, M, G, A, O
Adhesion Glass Aluminum Vinyl	ASTM D903	12 - 15 pli 10 - 14 pli 12 - 15 pli	12 - 15 pli 10 - 14 pli 12 - 15 pli

*The values outlined reflect testing that was conducted under laboratory conditions, actual results may vary. The information provided in the above table is not intended for use in preparing specifications. Please consult manufacturer for additional information.

Permanently Flexible

- Will not shrink or crack
- Waterproof
- Mold/Mildew resistant
- Superior UV resistance

Interior and Exterior Applications

- Excellent adhesion to most building substrates
- Completely cured within 48 hours
- Will not sag or slump
- Tack-free in 10 minutes

Easily Gunned at all Temperatures

- Weatherproof plastic cartridges with removable tips
- Excellent tooling properties

VOC Compliant in all 50 States (Green Building Compliant)

- Low odor
- Solvent free

AAMA Verified for Window Installs

- Will not freeze
- Available in all major siding, trim coil, window, and metal roof manufacturer colors
- 18 month shelf life

Professional Grade

NOVAGARD

5109 Hamilton Avenue, Cleveland, OH 44114 USA
(216) 881-8111 | (800) 380-0138 | (216) 881-6977 F
novagard.com

ISO 9001:2015 QMS (with Design), IATF 16949:2016 QMS (with Design)
Certified Women's Business Enterprise



NovaFlex is proudly made in Cleveland, OH
Effective Date: Dec 2021-v2.6